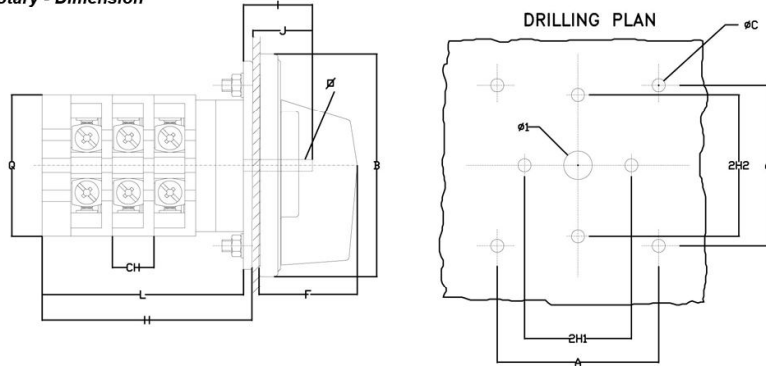


Rotary - Dimension



GT

Model	Amps	A	B	F	I	J	Q	ϕ	ϕC	ϕ1	CH	2H1	2H2
T-00	6-10A	36	50	28	23	19	34	5	5	9	9.5	25	-
T-0	12-20A	36	50	28	22	19	45	5	4.5	12	11.5	32	-
T-1	25A*	48	65	32.5	29	25	45	5	4.5	12	11.5	32	-
	32A	48	65	32.5	29	25	60	5	4.5	12	14.2	45	-
T-2	40A*	68	94	41.5	36.5	32.5	60	5	5.5	12	17.5	45	-
	63A*	68	94	41.5	36.5	32.5	60	5	5.5	12	17.5	45	-
	80-100A	68	94	41.5	33	29	76	7	5.5	12	20	-	60
	125-200A	68	94	41.5	33	29	84	7	5.5	12	27	-	60

* - Smaller mounting plate available on request.
I=27.5, J=24.5

		1	2	3	4	5	6	7	8	9	10	11	12
6-10A	L	23	32.5	42	51.5	61	70.5	80	89.5	99	108.5	118	127.5
	H	27	36.5	46	55.5	65	74.5	84	93.5	103	112.5	122	131.5
12-20A	L	34.5	46	57.5	69	80.5	92	103.5	115	126.5	138	149.5	161
	H	37.5	49	60.5	72	83.5	95	106.5	118	129.5	141	152.5	164
25A	L	34.5	46	57.5	69	80.5	92	103.5	115	126.5	138	149.5	161
	H	37.5	49	60.5	72	83.5	95	106.5	118	129.5	141	152.5	164
32A	L	46.4	60.6	74.8	89	103.2	117.4	131.6	145.8	160	174.2	188.4	202.6
	H	49.6	63.8	78	92.2	106.4	120.6	134.8	149	163.2	177.4	191.6	205.8
40A	L	49.8	67.3	84.8	102.3	119.8	137.3	154.8	172.3	189.8	207.3	224.8	242.3
	H	53	70.5	88	105.5	123	140.5	158	175.5	193	210.5	228	245.5
63A	L	49.8	67.3	84.8	102.3	119.8	137.3	154.8	172.3	189.8	207.3	224.8	242.3
	H	53	70.5	88	105.5	123	140.5	158	175.5	193	210.5	228	245.5
80-100A	L	58.5	78.5	98.5	118.5	138.5	158.5	178.5	198.5	218.5	238.5	258.5	278.5
	H	62.5	82.5	102.5	122.5	142.5	162.5	182.5	202.5	222.5	242.5	262.5	282.5
125-200A	L	67	94	121	147.5	174	201	227.5	254	281	307.5	334	361
	H	71	98	125	151.5	178	205	231.5	258	285	311.5	338	365